

Minimal Pairs **L and R**

A minimal pair is a set of two words that are only differentiated by one tiny sound.

If learners can distinguish these tiny sounds, it will help them with pronunciation and comprehension.

These flash cards should be used in pairs. Each pair has the same letter in the corner; **A** with **A**, etc.

A



belly

©2007 Advanced Teacher Training Inc. All Rights Reserved.
www.teyl.com and www.teachchildrensl.com

C



light

©2007 Advanced Teacher Training Inc. All Rights Reserved.
www.teyl.com and www.teachchildrensl.com

C



right

©2007 Advanced Teacher Training Inc. All Rights Reserved.
www.teyl.com and www.teachchildrensl.com

A



berry

©2007 Advanced Teacher Training Inc. All Rights Reserved.
www.teyl.com and www.teachchildrensl.com

D



lamp

©2007 Advanced Teacher Training Inc. All Rights Reserved.
www.teyl.com and www.teachchildrensl.com

D



ramp

©2007 Advanced Teacher Training Inc. All Rights Reserved.
www.teyl.com and www.teachchildrensl.com

B



lock

©2007 Advanced Teacher Training Inc. All Rights Reserved.
www.teyl.com and www.teachchildrensl.com

E



fleas

©2007 Advanced Teacher Training Inc. All Rights Reserved.
www.teyl.com and www.teachchildrensl.com

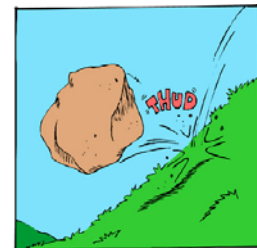
E



freeze

©2007 Advanced Teacher Training Inc. All Rights Reserved.
www.teyl.com and www.teachchildrensl.com

B



rock

©2007 Advanced Teacher Training Inc. All Rights Reserved.
www.teyl.com and www.teachchildrensl.com

Minimal Pairs I and EE

A minimal pair is a set of two words that are only differentiated by one tiny sound.

If learners can distinguish these tiny sounds, it will help them with pronunciation and comprehension.

These flash cards should be used in pairs. Each pair has the same letter in the corner; A with A, etc.

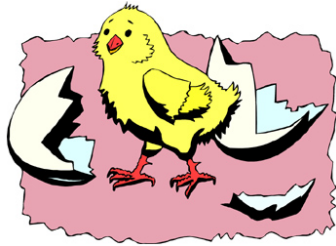
A



slip

©2007 Advanced Teacher Training Inc. All Rights Reserved.
www.teyl.com and www.teachchildrensl.com

C



chick

©2007 Advanced Teacher Training Inc. All Rights Reserved.
www.teyl.com and www.teachchildrensl.com

C



cheek

©2007 Advanced Teacher Training Inc. All Rights Reserved.
www.teyl.com and www.teachchildrensl.com

A



sleep

©2007 Advanced Teacher Training Inc. All Rights Reserved.
www.teyl.com and www.teachchildrensl.com

D



lip

©2007 Advanced Teacher Training Inc. All Rights Reserved.
www.teyl.com and www.teachchildrensl.com

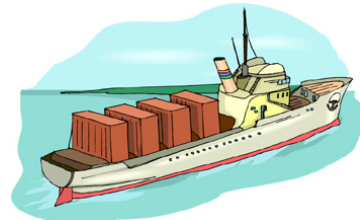
D



leap

©2007 Advanced Teacher Training Inc. All Rights Reserved.
www.teyl.com and www.teachchildrensl.com

B



ship

©2007 Advanced Teacher Training Inc. All Rights Reserved.
www.teyl.com and www.teachchildrensl.com

E



pick

©2007 Advanced Teacher Training Inc. All Rights Reserved.
www.teyl.com and www.teachchildrensl.com

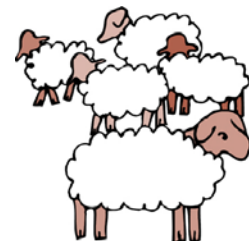
E



peek

©2007 Advanced Teacher Training Inc. All Rights Reserved.
www.teyl.com and www.teachchildrensl.com

B



sheep

©2007 Advanced Teacher Training Inc. All Rights Reserved.
www.teyl.com and www.teachchildrensl.com

Minimal Pairs **R** and **W**

A minimal pair is a set of two words that are only differentiated by one tiny sound.

If learners can distinguish these tiny sounds, it will help them with pronunciation and comprehension.

These flash cards should be used in pairs. Each pair has the same letter in the corner; **A** with **A**, etc.

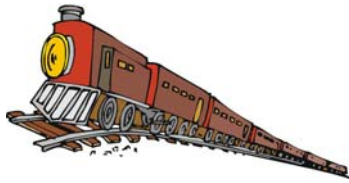
A



rig

©2007 Advanced Teacher Training Inc. All Rights Reserved.
www.teyl.com and www.teachchildrensl.com

C



rail

©2007 Advanced Teacher Training Inc. All Rights Reserved.
www.teyl.com and www.teachchildrensl.com

C



whale

©2007 Advanced Teacher Training Inc. All Rights Reserved.
www.teyl.com and www.teachchildrensl.com

A



wig

©2007 Advanced Teacher Training Inc. All Rights Reserved.
www.teyl.com and www.teachchildrensl.com

D



rich

©2007 Advanced Teacher Training Inc. All Rights Reserved.
www.teyl.com and www.teachchildrensl.com

D



witch

©2007 Advanced Teacher Training Inc. All Rights Reserved.
www.teyl.com and www.teachchildrensl.com

B



ring

©2007 Advanced Teacher Training Inc. All Rights Reserved.
www.teyl.com and www.teachchildrensl.com

E



rest

©2007 Advanced Teacher Training Inc. All Rights Reserved.
www.teyl.com and www.teachchildrensl.com

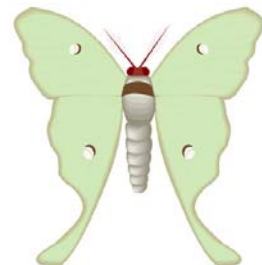
E



west

©2007 Advanced Teacher Training Inc. All Rights Reserved.
www.teyl.com and www.teachchildrensl.com

B



wing

©2007 Advanced Teacher Training Inc. All Rights Reserved.
www.teyl.com and www.teachchildrensl.com

Minimal Pairs E and A

A minimal pair is a set of two words that are only differentiated by one tiny sound.

If learners can distinguish these tiny sounds, it will help them with pronunciation and comprehension.

These flash cards should be used in pairs. Each pair has the same letter in the corner; A with A, etc.

A



bet

©2007 Advanced Teacher Training Inc. All Rights Reserved.
www.teyl.com and www.teachchildrensl.com

C



dead

©2007 Advanced Teacher Training Inc. All Rights Reserved.
www.teyl.com and www.teachchildrensl.com

C



dad

©2007 Advanced Teacher Training Inc. All Rights Reserved.
www.teyl.com and www.teachchildrensl.com

A



bat

©2007 Advanced Teacher Training Inc. All Rights Reserved.
www.teyl.com and www.teachchildrensl.com

D



beg

©2007 Advanced Teacher Training Inc. All Rights Reserved.
www.teyl.com and www.teachchildrensl.com

D



bag

©2007 Advanced Teacher Training Inc. All Rights Reserved.
www.teyl.com and www.teachchildrensl.com

B



bed

©2007 Advanced Teacher Training Inc. All Rights Reserved.
www.teyl.com and www.teachchildrensl.com

E



gem

©2007 Advanced Teacher Training Inc. All Rights Reserved.
www.teyl.com and www.teachchildrensl.com

E



jam

©2007 Advanced Teacher Training Inc. All Rights Reserved.
www.teyl.com and www.teachchildrensl.com

B



bad

©2007 Advanced Teacher Training Inc. All Rights Reserved.
www.teyl.com and www.teachchildrensl.com

Minimal Pairs P and F

A minimal pair is a set of two words that are only differentiated by one tiny sound.

If learners can distinguish these tiny sounds, it will help them with pronunciation and comprehension.

These flash cards should be used in pairs. Each pair has the same letter in the corner; A with A, etc.

A



pride

©2007 Advanced Teacher Training Inc. All Rights Reserved.
www.teyl.com and www.teachchildrensl.com

C



pat

©2007 Advanced Teacher Training Inc. All Rights Reserved.
www.teyl.com and www.teachchildrensl.com

C



fat

©2007 Advanced Teacher Training Inc. All Rights Reserved.
www.teyl.com and www.teachchildrensl.com

A



fried

©2007 Advanced Teacher Training Inc. All Rights Reserved.
www.teyl.com and www.teachchildrensl.com

D



pull

©2007 Advanced Teacher Training Inc. All Rights Reserved.
www.teyl.com and www.teachchildrensl.com

D



full

©2007 Advanced Teacher Training Inc. All Rights Reserved.
www.teyl.com and www.teachchildrensl.com

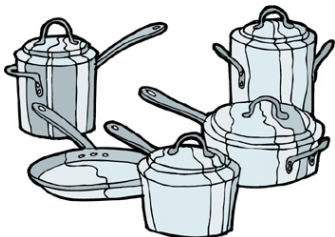
B



copy

©2007 Advanced Teacher Training Inc. All Rights Reserved.
www.teyl.com and www.teachchildrensl.com

E



pan

©2007 Advanced Teacher Training Inc. All Rights Reserved.
www.teyl.com and www.teachchildrensl.com

E



fan

©2007 Advanced Teacher Training Inc. All Rights Reserved.
www.teyl.com and www.teachchildrensl.com

B



coffee

©2007 Advanced Teacher Training Inc. All Rights Reserved.
www.teyl.com and www.teachchildrensl.com